



2.425



2.44(5/9)



2.4646

The normal abbrev for the state is CONN, except as listed, ie: CT

Following are illustrations of Types in the listings with a PIC Note.



2.46(16/65)



DURHAM 2.6*26



1.64(59/78)



2.467405



2.4684



1.7283



Alt Box Roller 6.46141 [WESTPORT / CONN] [SAUGATUCK / STA.]



2.46(13/92)

Following are illustrations of Connecticut Towns with Type Numbers.



1.2644



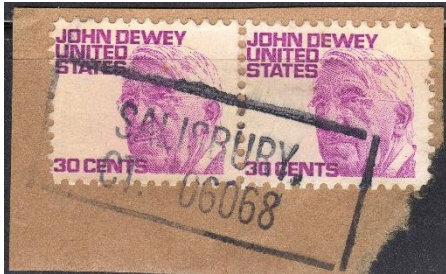
1.4274



2.4273



2.4283



2.46005



2.461



2.461005



4.4254



4.42(73/13)



4.48(14/73)



4.46141



4.4644 long box roller



4.5253 PRO

CONNECTICUT

2020

Type	Note	Town	Note	Usage
2.44(5/9)		AVON		1938, 54
2.46		AVON,		1938
2.46	CON	AVON,		1954
2.46651		AVON		1938
2.467005		AVON, / CT		1967, 68
2.46951		AVON		1954
2.46		BALTIC,		1938, 54
2.4674		BALTIC,		1934, 38
2.46	CON	BANTAM,		1960
1.2644		BERLIN,		1913, 17
2.46		BERLIN,		1933
4.42(54/74)		BERLIN		1922, 26, 32
2.469		BETHEL	CQ	1917
2.64(5/9)		BLOOMFIELD		1938, 54
2.425		BRANFORD,		1922, 23
2.46006		BRANFORD,		1925SD, 26, 31, 32, 33
2.46		BRANFORD,		1938
2.46		BRIDGEFIELD	CQ	1914
2.4214		BRIDGEPORT	CQ	1914
2.46		BRIDGEPORT,		1954, 59D
2.46	CON	BRIDGEPORT,		1954, 59D, 57, 60A, 68, 75
2.460005		BRIDGEPORT, / CT		1978
2.64(5/9)		BRIDGEPORT		1938
4.4213		BRIDGEPORT	CQ	1908, 17, 22, 23, 25SD, 26
4.4613		BRIDGEPORT,		1922, 23, 25SD, 30, 54
4.46136		BRIDGEPORT		1916, 22, 26, 31, 32
2.46	CON	BRISTOL,		1954
4.4254		BRISTOL		1922
2.4283	CON	BROAD BROOK,		1931, 38
4.4644		BROAD BROOK		1926, 37
2.46		BROOKFIELD,		1938
2.465		BROOKFIELD	CQ	1938
2.461005	CON	BROOKFIELD CENTER, / CT		1964
2.669		BROOKLYN		1938
2.4644		BURNSIDE	CQ	1922
2.4283		CANAAN,		1931
2.46	CON	CANAAN,		1958
2.4664		CANAAN,		1928SD, 38
2.467		CANAAN,		1928SD
2.461		CANNONDALE,		1938
2.46(16/65) PIC		CANTERBURY		1957

2.64(5/9)		CENTERBROOK		1954SD
2.4613		CENTRAL VILLAGE,		1934
2.66		CENTRAL VILLAGE	CQ	1908
2.46		CHESHIRE	CQ	1912
2.46		CHESTER		1917
2.46	VAR	CHESTER,		1917, 26, 31, 34, 38
2.46	VAR	CHESTER,		1926, 31
2.4644		CHESTER,		1914
4.4254		CHESTER		1917, 22
4.42(54/74)		CHESTER		1922, 26, 31, 32
4.4254		CLINTON		1922, 26
4.4274		CLINTON		1926, 32
4.4613		CLINTONVILLE	CQ	1926
2.46		COBALT,		1954
1.1284	CON	COLLINSVILLE,		1913
1.1643		CORNWALL,		1960
1.4674		COSCOB,		1926
2.4283		COSCOB,		1926, 33
2.46		COSCOB,		1922, 26
2.46	CON	COSCOB,		1928SD
2.46	CON	COS COB,		1938
2.4653		COS COB,		1938
2.469		COS COB		1931
2.46	CON	CROMWELL,		1954
4.4644		CROMWELL		1938
2.467405		CROMWELL, / CT		1954SD
1.2644		DANBURY,		1917, 22
2.46	CON	DANBURY	CQ	1938
2.625		DANBURY		1938, 54
4.4273		DANBURY		1922, 26
1.1644		DANIELSON	CQ	1959
2.425		DANIELSON	CQ	1930
2.4263		DANIELSON	CQ	1934
2.56		DANIELSON,		1938
4.4253		DANIELSON		1922, 26
1.66		DEEP RIVER		1926,31
2.465		DEEP RIVER,		1938
2.4653		DEEP RIVER	CQ	1938
2.64(5/9)		DEEP RIVER		1938, 54
2.66		DEEP RIVER	CQ	1917, 26, 28SD, 32
2.428		DERBY,		1914, 17
2.4283		DERBY		1921
7.4643	DLR	DERBY		1916, 17, 22
2.4263		DURHAM,		1926, 31, 38, 39

2.4293		DURHAM,		1938, 40
2.46	CON	DURHAM,		1931D
2.4664		DURHAM,		1922, 38
2.625		DURHAM		1938
2.6*26	PIC	DURHAM,		1932
2.669		DURHAM		1943, 45
2.56		EAST BERLIN,		1912, 22
4.4643		EAST BERLIN		1931
1.466454		EASTFORD		1954
2.4214		EAST HADDAM,		1914, 26, 30
2.56		EAST HADDAM,		1954
2.4214		EAST HAMPTON,		1926
2.4243		EAST HAMPTON,		1926, 28SD, 30, 31, 38
2.5214		EAST HAMPTON	CQ	1914
2.56		EAST HAMPTON	CQ	1938
2.4644		EAST LYME,		1926
2.465		EAST RIVER	CQ	1932
2.464405		EAST WINDSOR HILL, CT		1968
2.4254		ELMWOOD		1928
2.46	CON	ENFIELD,		1954, 58
1.1642		ESSEX,		1926
4.4274		ESSEX		1922, 26, 31, 32
4.4644		ESSEX		1926
4.4614		FAIRFIELD		1922, 30, 31
2.46	CON	FARMINGTON,		1954
2.64(5/9)		FARMINGTON		1954
2.4214		FORESTVILLE,		1922, 23, 26
1.64(59/78)	PIC	GALES FERRY	CQ	1938
2.64(5/9)		GALES FERRY		1938
2.4263		GEORGETOWN	CQ	1932
1.4643		GLASTONBURY,		1908IMP, 10, 12IMP
1.56		GLASTONBURY,		1910, 12IMP
2.4214		GLASTONBURY,		1912IMP
2.425		GLENBROOK	CQ	1918
2.46		GRANBY,		1926, 30, 32, 33, 38
2.4653		GRANBY,		1938
2.46641		GRANBY,		1913
2.4643		GREEN FARMS,		1931
2.4214		GREENS FARMS,		1931
2.4243		GREENS FARMS	CQ	1940
2.4283	CON	GREENS FARMS,		1931D
2.46		GREENWICH,		1913, 38
1.4283	CON	GROSVENORS DALE	CQ	1930
2.460005		GROTON, / CT		1968, 77

2.4274		GUILFORD	CQ	1917
2.465		GUILFORD,		1922
4.4274		GUILFORD		1931
4.4644		GUILFORD		1926, 35, 37
2.46	CON	HADDAM,		1960
1.4658		HADLYME,		1938
4.5273		HARTFORD		1910, 14, 17, D, DOC
2.46	CON	HAZARDVILLE,		1968
2.460005		HAZARDVILLE, / CT		1968
2.64(5/9)		HAZARDVILLE		1943
2.425		HIGGANUM,		1926
2.460005		HIGGANUM, / CT		1954
2.46		IVORYTON		1914
2.460005		IVORYTON, / CT		1978
2.4214		JEWETT CITY,		1926, 31
2.4283		JEWETT CITY,		1928SD, 38
2.46		JEWETT CITY	CQ	1922
2.46	CON	JEWETT CITY,		1959
2.465		JEWETT CITY	CQ	1938
2.56		JEWETT CITY,		1908, 38
2.56		KENSINGTON	CQ	1912
2.4283		KENT,		1926, 32, 37
2.42641		KENT,		1922, 33
2.429		KENT		1926
2.46		KENT,		1944SD
2.46	CON	KENT,		1954
2.4664		KENT		1917
2.466454		KENT,		1928SD, 38, 52
2.625		KENT		1938, 54
2.64(5/9)		KENT		1954
1.4644		LAKEVILLE	CQ	1954
2.46	CON	LAKEVILLE,		1954
7.4643	DLR	LAKEVILLE		1917, 17SD, 18, 20, 22, BH, 26
2.46	CON	LEDYARD,		1954
1.4662		LITCHFIELD		1954
2.4263		LITCHFIELD,		1938, 40
2.465		LITCHFIELD	CQ	1930
2.64(5/9)		LITCHFIELD		1938
2.46002		LYME		1928SH
2.46742		LYME,		1912, 13
1.4657		MADISON	CQ	1938
2.46		MADISON	CQ	1926
4.4254		MADISON		1926
4.4643		MADISON		1919, 22

4.46431		MADISON		1922, BH
2.467		MARION	CQ	1953
1.26		MELROSE		1938
1.1263		MERIDEN,		1931D
1.2283		MERIDEN,		1938
1.2284		MERIDEN,		1938
1.26		MERIDEN,		1912PPD, 25D
1.3283		MERIDEN,		1912PPD, 17D, 25D
2.4243		MIDDLEBURY,		1926, 34, 38
2.46	CON	MIDDLEFIELD	CQ	1954
1.1262		MIDDLE HADDAM,		1937
4.4613		MIDDLETOWN		1926
4.46136		MIDDLETOWN		1932
2.46		MILFORD,		1954
2.4263		MILLDALE,		1930
2.46	CON	MILLDALE,		1938, 54, 60A, 61
2.465		MILLDALE	CQ	1930
2.64(5/9)		MILLDALE		1954, 56
2.669		MILLDALE		1938
2.46		MONTVILLE,		1922
2.469		MOODUS	CQ	1917, 39
2.4293		MOOSUP,		1926, 30, 31, 38
2.46	CON	MOOSUP,		1938
2.4664		MOOSUP	CQ	1917, 19
2.467405	PIC	MOOSUP / CONN		1971
2.463*4		NAUGATUCK		1908, 13
2.465		NAUGATUCK,		1922
4.4213		NAUGATUCK		1926, 30, 31, 32
4.4613		NAUGATUCK,		1922, 25, 26
4.4614		NAUGATUCK,		1917, 23
4.464301		NAUGATUCK,		1917
2.4214		NEW HARTFORD	CQ	1922
1.1282		NEW HAVEN,		1938
1.461	CON	NEW HAVEN,		1911D
4.42(13/73)		NEW HAVEN		1917, 17SD
4.4213	PRO	NEW HAVEN,		1922, 23, 26, 30D, 31, 31D, 32
4.4614	PRO	NEW HAVEN		1917D, 22, 30D
4.4614		NEW HAVEN,		1922, 25
4.46141	PRO	NEW HAVEN		1917, 22, 23, 25SD, 26, 29, 30, 31, D, 32
4.48(13/73)		NEW HAVEN		1917, 17A, 18, 21, 22, 25
4.5253	PRO	NEW HAVEN		1917
7.4644		NEW HAVEN		1914
2.4263		NEWINGTON	CQ	1938
2.460005		NEW LONDON, / CT		1968

7.4643	DLR	NEW MILFORD		1917, 22, 26
2.425		NEWTOWN		1930
2.4263		NEWTOWN,		1931, 38
2.425		NIANTIC,		1930
2.4283		NIANTIC,		1926, 34
2.44(5/9)		NOANK		1938, 54
2.4664		NOANK	CQ	1926
1.1284		NORFOLK,		1931
1.166354		NORFOLK,		1938
2.46		NORFOLK,		1928SD, 38
2.465		NORFOLK,		1917, 19
2.669		NORFOLK		1954
4.4274		NORFOLK		1926
2.669		NOROTON		1940
2.561		NOROTON HEIGHTS	CQ	1937
2.6214		NOROTON HEIGHTS	CQ	1912
4.4643		NOROTON HEIGHTS	CQ	1926, 40
7.4643	DLR	NOROTON HEIGHTS		1917
2.461		NORTH GROSVEN- / OR DALE, CONN.		1932
2.461		NORTH GROSVENOR / DALE, CONN.		1963, 68
2.4613		NORTH GROSVENOR DALE,		1926
2.56		NORTH STONINGTON	N CQ	1954
2.5614		NORTH STONINGTON,		1938
2.66(44/95)		NORTH WOODBURY	CQ	1931D, 59
2.465		NORWALK	CQ	1917
4.42(53/63)		NORWALK		1922
1.2644		NORWICH,		1911D
2.46		OAKVILLE,		1908
2.465		OAKVILLE	CQ	1917
4.42(53/73)		OAKVILLE		1917, 22, 26
4.4274		OAKVILLE		1922, 26, 30, 31, 32, 34
2.42431		OLD GREENWICH,		1926, 32
2.4283	CON	OLD GREENWICH,		1926, 31, 33, 34
2.56		OLD GREENWICH	CQ	1938
2.5614		OLD GREENWICH,		1938
2.625		OLD GREENWICH		1928SD, 38
2.46		OLD LYME,		1926
2.260005		OLD LYME, / CT		1971
2.4662		OLD LYME,		1931
2.4684	PIC	OLD LYME	CQ	1938
2.669		OLD LYME	CQ	1954
2.56		OLD SAYBROOK	CQ	1938

2.5644		OLD SAYBROOK,		1938, 54
1.2643		ORANGE,		1922, 32
2.4283		ORANGE,		1938, 40
2.469		ORANGE		1938
2.425		PEQUABUCK,		1926, 28SH, 30, 31, 34, 37
2.4263		PEQUABUCK,		1931, 37, 38, 40
2.46	CON	PEQUABUCK,		1938, 54
4.4274		PEQUABUCK		1926, 34, 36
2.466454		PLAINFIELD,		1954, 59
2.476405		PLAINFIELD, / CT		1972
2.4644		PLAINVILLE	CQ	1961
2.425	CON	PLANTSVILLE,		1922, 23, 26
2.64(5/9)		PLANTSVILLE		1954
2.66		PLANTSVILLE		1926, 31, 35
2.4613		POMFRET CENTER,		1938
2.66		POMFRET CENTER	CQ	1938
2.46	CON	POQUONOCK,		1954
2.460005		POQUONOCK, / CT		1954
2.64(5/9)		POQUONOCK		1938
2.66(44/94)		POQUONOCK BRIDGE		1938
1.1614		PUTNAM,		1914
1.2644		PUTNAM,		1914, 31D
1.7283	PIC	PUTNAM, / WINDHAM COUNTY, / CONN.		1911D
2.46	CON	PUTNAM,		1938, 54, 59D
2.4673		PUTNAM	CQ	1908, 11D
2.669		PUTNAM		1928SD, 38
4.4254		PUTNAM		1917, 21, 22, 25SD
4.42(73/13)		PUTNAM		1917, 18
2.46	CON	RIDGEFIELD,		1954
2.64(5/9)		RIVERSIDE		1938
4.42131		RIVERSIDE		1917, 22, 23, 26
4.42(54/74)		RIVERSIDE		1926, 37
4.4274		RIVERSIDE		1931, 32, 34
4.4284		RIVERSIDE		1938
4.4644		RIVERSIDE		1932, 40
2.64(5/9)		ROCKFALL		1938, 53, 54
2.669		ROCKFALL		1952
2.425		ROCKVILLE		1917
1.4643		ROCKYHILL,		1926
2.465		ROWAYTON	CQ	1926
2.460005		ROXBURY, / CT		1979
2.4664		ROXBURY	CQ	1954

1.1282		SACHEM HEAD,		1930D
2.4263		SALISBURY,		1931, 34
2.46	CON	SALISBURY,		1954
2.460005		SALISBURY, / CT		1968
2.669		SALISBURY		1938
4.4254		SALISBURY		1922
4.48(14/73)		SALISBURY		1917, 22
4.4254		SANDY HOOK		1926
4.4644		SANDY HOOK		1938
2.465		SAUGATUCK		1921, 26
2.46		SAYBROOK,		1926, 31, 38
4.4254		SAYBROOK		1923
4.42(54/74)		SAYBROOK		1926, 30
1.2644		SAYBROOK POINT,		1926
2.46	CON	SEYMOUR	CQ	1954
1.1664554		SHARON,		1954,63
2.4283		SHARON	CQ	1928SD
2.4653		SHARON,		1938
4.4254		SHARON		1922
4.46431		SHARON		1917
2.1664		SHELTON,		1938
2.46		SHELTON,		1908, 13, 14
2.466454		SHERMAN	CQ	1954
2.4214		SHORT BEACH	CQ	1926, 38
2.525	CON	SHORT BEACH	CQ	1926
2.460005		SIMSBURY, / CT		1977
7.4643	DLR	SIMSBURY		1917, 22, 23, 26
1.466354		SOMERSVILLE,		1938, 54, 57
1.5654		SOMERSVILLE,		1938
1.4643		SOUTHBURY		1954
4.4273		SOUTHBURY		1928SD
2.561		SOUTH COVENTRY,		1926, 31
1.4274		SOUTH GLASTONBURY		1938
2.4643		SOUTH GLAS- / TONBURY, CONN.		1938
2.5214		SOUTH GLASTONBURY	CQ	1912, 17, 38
1.2256		SOUTHINGTON,		1926, 31
1.2644		SOUTHINGTON,		1922, 23, 31
1.2673		SOUTHINGTON,		1917, 22
2.5214		SOUTH MANCHESTER	CQ	1912
44,643		SOUTH MERIDEN	CQ	1926
4.48(13/73)		SOUTH MERIDEN		1911D, 17
1.4613		SOUTH NORWALK	SO	1914
2.4263		SOUTHPORT,		1926, 28SD, 31, 34, 38

2.44(5/9)		SOUTHPORT		1938, 48
2.46001		SOUTHPORT	CQ	1922, 26
2.46	CON	SOUTHPORT,		1938, 54
2.460005		SOUTHPORT, / CT		1962, 66
2.4663		SOUTHPORT,		1931, 32
2.469454		SOUTHPORT,		1931D
2.460005		SOUTH WINDSOR, / CT		1968
1.161405		STAFFORD, CT.		1968
1.2644		STAFFORD SPRINGS,		1908
2.460005		STAFFORD SPRINGS, / CT		1978
2.461	CON	STAFFORD SPRINGS,		1959D
2.4613		STAFFORD SPRINGS,		1922, 26, 30, 31
2.521		STAFFORD SPRINGS	CQ	1918, 23
2.525	CON	STAFFORD SPRINGS,		1928SH, 38, 51
2.56		STAFFORD SPRINGS	SPG	1954, 60
2.66		STAFFORD SPRINGS		1938, 40, 43SD
2.5673		STAMFORD	CQ	1912
2.461		STEPNEY DEPOT	CQ	1931
7.4643	DLR	STEPNEY DEPOT		1917D
4.4254		STERLING		1922
4.4274		STERLING		1922, 25SH
4.4644		STERLING		1937, 38, 40, 48
2.4614		STILL RIVER,		1914
2.4243		STONINGTON,		1938, 40
2.461		STONINGTON,		1913
2.461005		STONINGTON, / CT		1968
2.465		STONINGTON,		1930, 37
2.625		STONINGTON		1938, 40
4.4274		STONINGTON		1926, 31
2.469		STORRS		1938
2.46	CON	STRATFORD,		1954
1.1273		SUFFIELD,		1938
2.46		SUFFIELD,		1931
2.46	CON	SUFFIELD,		1954
1.463*4		TAFTVILLE		1912
2.46	CON	TARIFFVILLE,		1954
1.1644		THOMASTON,		1938
2.64(5/9)		THOMPSONVILLE		1930D
4.4614	CON	THOMPSONVILLE		1954, 68
4.46149	CON	THOMPSONVILLE		1922, 26
2.463*4		TORRINGTON		1908
7.4643	DLR PRO	TORRINGTON		1916-17, D, 18, 22-23, 25, SD, 26, 28SH, SD, 29-31, D, 32, 38, 40
2.46	CON	TRUMBULL,		1954, 59D

2.4653		TRUMBULL,		1938
2.4243		VERSAILLES,		1931, 38, 39, 40
2.465		VERSAILLES,		1926, 37
2.669		VERSAILLES		1938, 56
4.4643	PRO	VERSAILLES		1926, 30, 31, 34, 38
4.46441		VERSAILLES,		1928SD, 54, 59, 62
2.465		VOLUNTOWN,		1938
2.46		WAREHOUSE / POINT, CONN.		1954
2.525	CON	WAREHOUSE POINT	CQ	1926
2.5614		WAREHOUSE POINT	CQ	1926
2.5643		WAREHOUSE POINT	CQ	1943
2.66		WARRENVILLE		1917
2.4243		WASHINGTON,		1938
2.4263		WASHINGTON,		1931, 40
7.4643	DLR	WASHINGTON DEPOT		1922, 38, 54
2.4214		WATERBURY	CQ	1932
2.4273		WATERBURY	CQ	1908
2.46	CON	WATERBURY,		1954, 59D, 62
2.4646		WATERBURY,		1954
2.465		WATERBURY,		1938
2.4654	CON	WATERBURY	CQ	1911D
4.46131		WATERBURY		1917, 17D, 18, 22
2.460005		WATERTOWN, / CT		1966, 78
1.1613		WESTBROOK		1933
2.4254		WESTBROOK	CQ	1926, 31
2.46		WESTBROOK,		1922, 25SD
2.66		WESTBROOK		1917, 17SD, 22
2.4214		WEST CHESHIRE,		1914
4.4643		WEST CORNWALL	CQ	1919, 23
4.4644		WEST CORNWALL		1931
2.460005		WEST GRANBY, / CT		1969
4.4213		WESTPORT		1922, 26, 28SD
4.46141	PRO	WESTPORT		1922, 26, 32
4.46431		WESTPORT,		1923, 26
6.46141	PIC	[WESTPORT / CONN] [SAUGATUCK / STA]		1922
2.56	CON	WEST REDDING,		1954
1.4673		WEST SIMSBURY,		1954
2.46	CON	WEST SUFFIELD	W CQ	1954
2.4244		WESTVILLE	CQ	1922
2.4614		WESTVILLE	CQ	1917
2.460005		WEST WILLINGTON, / CT		1966
2.5214		WEST WILLINGTON,		1938

4.4274		WEST WILLINGTON		1926, 31
2.46(13/92) PIC		WILLIMANTIC,		1908
2.4273		WILLIMANTIC		1914
4.4613		WILLIMANTIC,		1922, 23, 26, 32
2.46	CON	WILTON,		1954
2.460005		WILTON, / CT		1954
2.4263		WINDSOR,		1926, 28SD, 31, 31D, 37
2.46		WINDSOR,		1908, 13, 17D, 22, 23, 26, 30D
2.46	CON	WINDSOR,		1954, 66
2.460005		WINDSOR, / CT		1968
2.669		WINDSOR		1938
2.4646		WINDSOR LOCKS		1926, 31
2.625		WINDSOR LOCKS		1940
2.68(44/55)		WINDSOR LOCKS		1938
2.467		WOLCOTT,		1954, 59D
2.46		WOODBURY,		1938, 52
2.5253		WOODBURY		1922
2.64(5/9)		WOODBURY		1954
4.4274		WOODBURY		1926, 40
1.4263		WOODMONT,		1926, 31D, 32, 33
1.1672		WOODMONT,		1926, 31, 32, 32
2.465		WOODMONT	CQ	1926
4.4662		YANTIC		1922, 26, 32
2.46		YANTIC	CQ	1926, 32