

**COLLECTION SUGGESTION: RELATE
SUBJECT OF STAMP AND TOWN OF PRECANCEL**

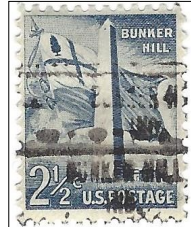
Steve Parker, PSS 5254

A collection can be made of precancels that are on stamps with a subject that has a connection of some kind to the precancel. For example, Marion, Ohio was the hometown of Warren G. Harding. So, part of a collection could be Marion precancels on the Harding Memorial Issue. Marion used 11 different types; four of those were Bureaus. However, only one Bureau, 598-42, is on a Harding 1½¢ coil. Any imprints on either of the two vinyl devices that were made long after his death, should be considered favors. Still, that leaves 5 possible impressions that might have been placed on a Harding Memorial Issue.

Shown below are scans of four stamps, listed in the order they are explained. These are examples of what could be included in this type of collection. Two of them should be obvious, Bunker Hill, Illinois and Bunker Hill, Indiana on the 2½¢ Bunker Hill stamp in the Liberty Issue. Cairo, Illinois, with



Bunker Hill, IL



Bunker Hill, IN



Cairo, IL

6 types, was U.S. Grant's hometown. Grant was the single subject, or one of the several individuals, on at least 15 different stamps, several of which were commemoratives. He does not appear on any stamp that was precanceled by BEP.

The last example is Dallas, Texas Type L-32 IHS on the JFK Memorial stamp. The date of the control is less than two years after the assassination. Other items that I have in my collection include Bethlehem, PA on a Christmas stamp and several Iowa types on the Iowa Statehood and Iowa Territory Issues.



Dallas, TX with an SRC dated control of June 1965

Something I like about collecting precancels is I have the freedom to make my collection exactly how I want it. There are endless precancel/stamp combinations I can think of but have not seen, such as Kinderhook, NY on the Martin Van Buren Presidential and Loveland, CO on a Love stamp.

**COLLECTION SUGGESTION: RELATE
SUBJECT OF STAMP AND TOWN OF PRECANCEL**

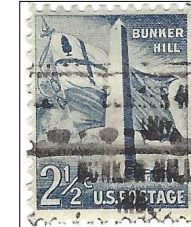
Steve Parker, PSS 5254

A collection can be made of precancels that are on stamps with a subject that has a connection of some kind to the precancel. For example, Marion, Ohio was the hometown of Warren G. Harding. So, part of a collection could be Marion precancels on the Harding Memorial Issue. Marion used 11 different types; four of those were Bureaus. However, only one Bureau, 598-42, is on a Harding 1½¢ coil. Any imprints on either of the two vinyl devices that were made long after his death, should be considered favors. Still, that leaves 5 possible impressions that might have been placed on a Harding Memorial Issue.

Shown below are scans of four stamps, listed in the order they are explained. These are examples of what could be included in this type of collection. Two of them should be obvious, Bunker Hill, Illinois and Bunker Hill, Indiana on the 2½¢ Bunker Hill stamp in the Liberty Issue. Cairo, Illinois, with



Bunker Hill, IL



Bunker Hill, IN



Cairo, IL

6 types, was U.S. Grant's hometown. Grant was the single subject, or one of the several individuals, on at least 15 different stamps, several of which were commemoratives. He does not appear on any stamp that was precanceled by BEP.

The last example is Dallas, Texas Type L-32 IHS on the JFK Memorial stamp. The date of the control is less than two years after the assassination. Other items that I have in my collection include Bethlehem, PA on a Christmas stamp and several Iowa types on the Iowa Statehood and Iowa Territory Issues.



Dallas, TX with an SRC dated control of June 1965

Something I like about collecting precancels is I have the freedom to make my collection exactly how I want it. There are endless precancel/stamp combinations I can think of but have not seen, such as Kinderhook, NY on the Martin Van Buren Presidential and Loveland, CO on a Love stamp.